
Laser cutter



Turning on and setting the focus

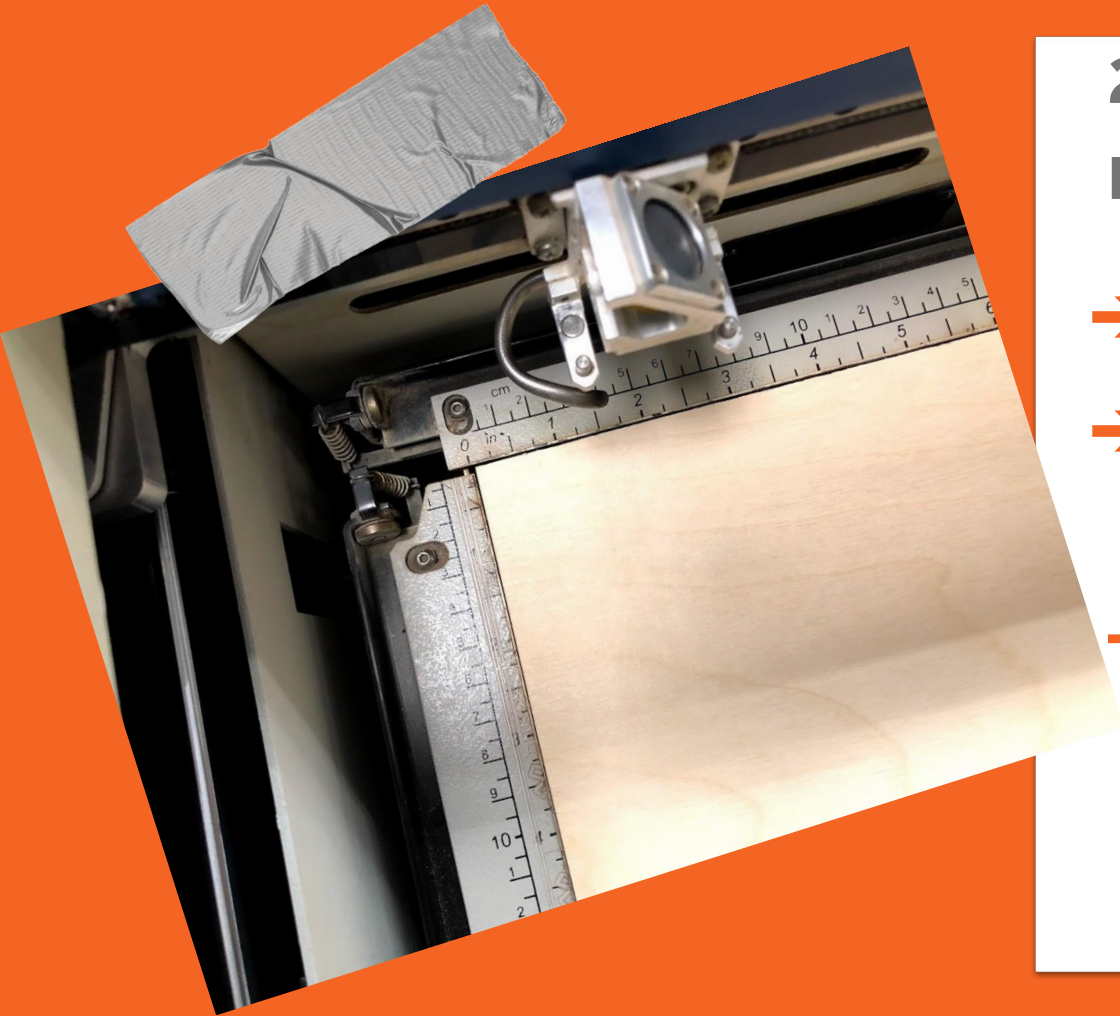
1. Turning on !

Turn on the laser with the button on the left



Make sure the aircon is on 5





2. Put the material in

- **Open glass**
- **Place the material on the grill**
- **Align**
Align the material with the lasers rulers

3. Focal point

- ◆ Put the focal point on the pins



4. Setting the focus

Important to prevent a fire hazard !

→ **Press X/Y off**

The lazer asks "X/Y off" ?

→ **Press Go**

The lazer will say "X/Y Disabled".

→ Now you can set the focus



5. Setting the height

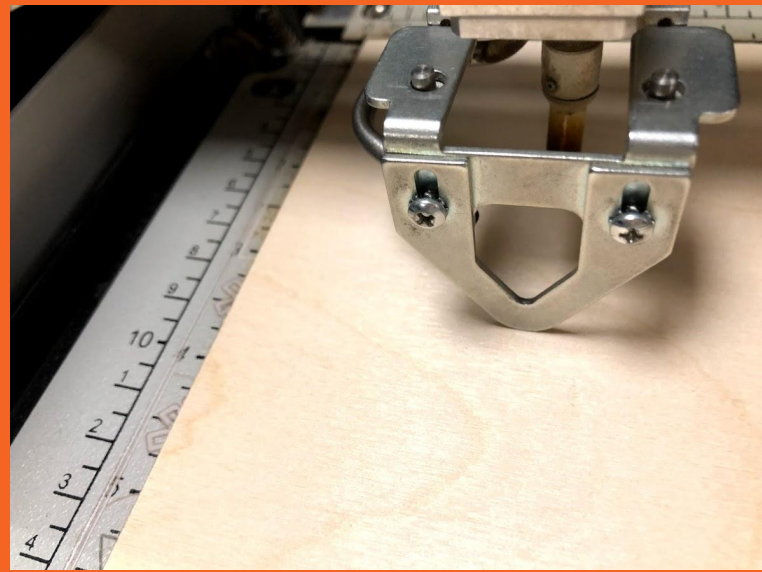
Important to prevent a fire hazard !

→ **Setting the height**

So the material and the iron touches

→ **Push up/down**

→ **Return the focus iron**





6. Turning on the pointer

→ **Turn on the pointer**

Then a green light will turn on

→ **Red pointer**

A red pointer will turn on where the laser will cut

7. Setting the starting point

→ Move the Y axis

By moving the blue axis with your hand

→ Move the lense

By holding one of the iron pins





8. Setting the starting point

→ **Press set home**

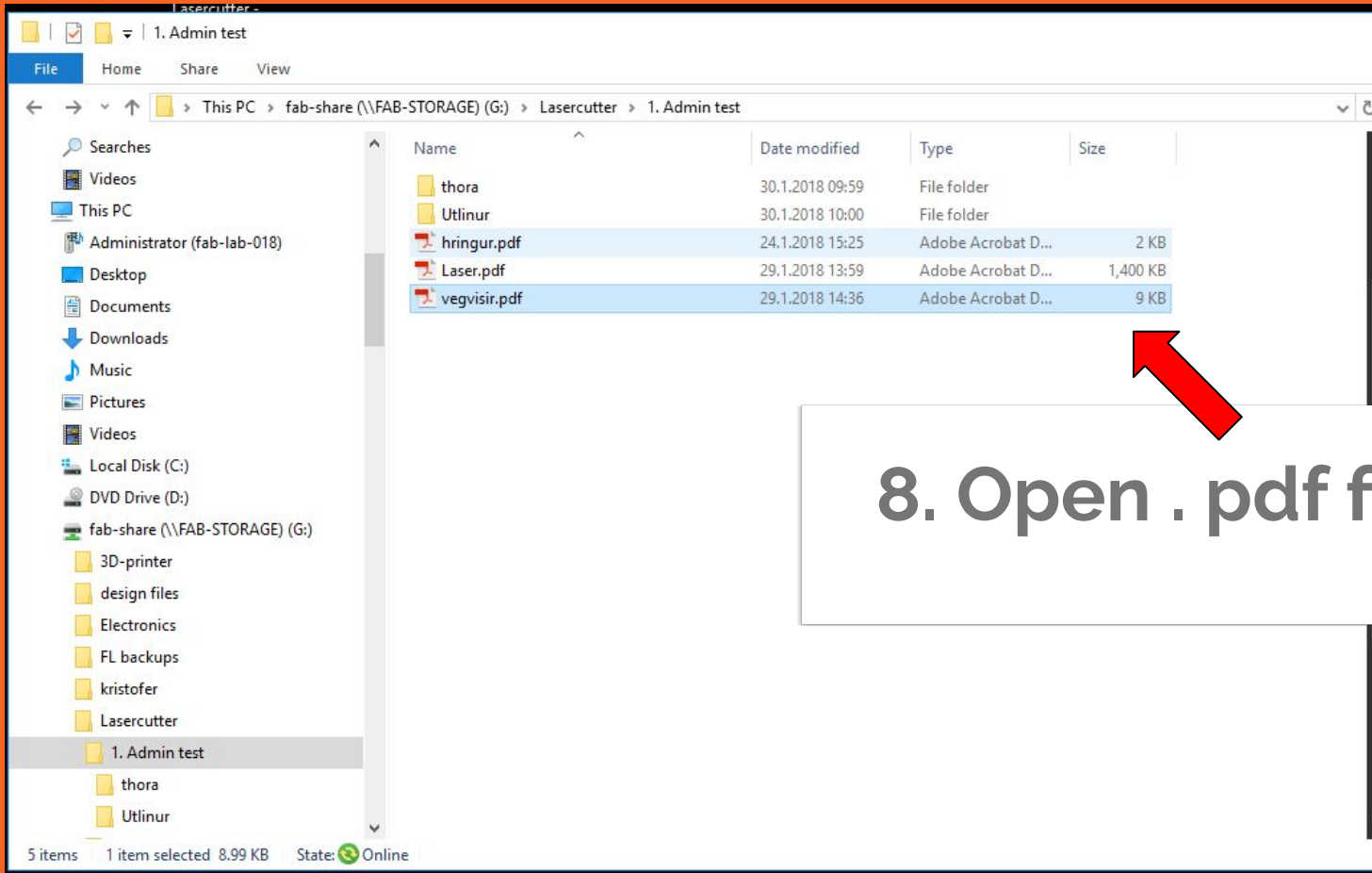
This will be the starting point

→ **Press Reset**

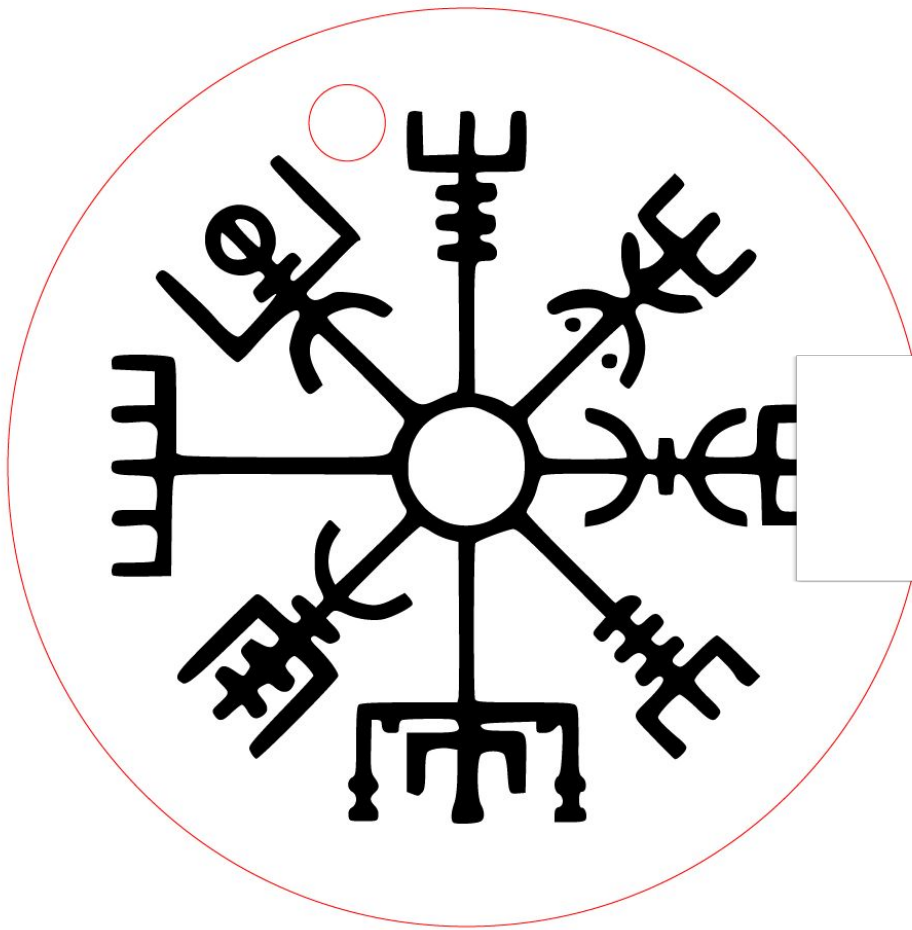
→ **Close glass**



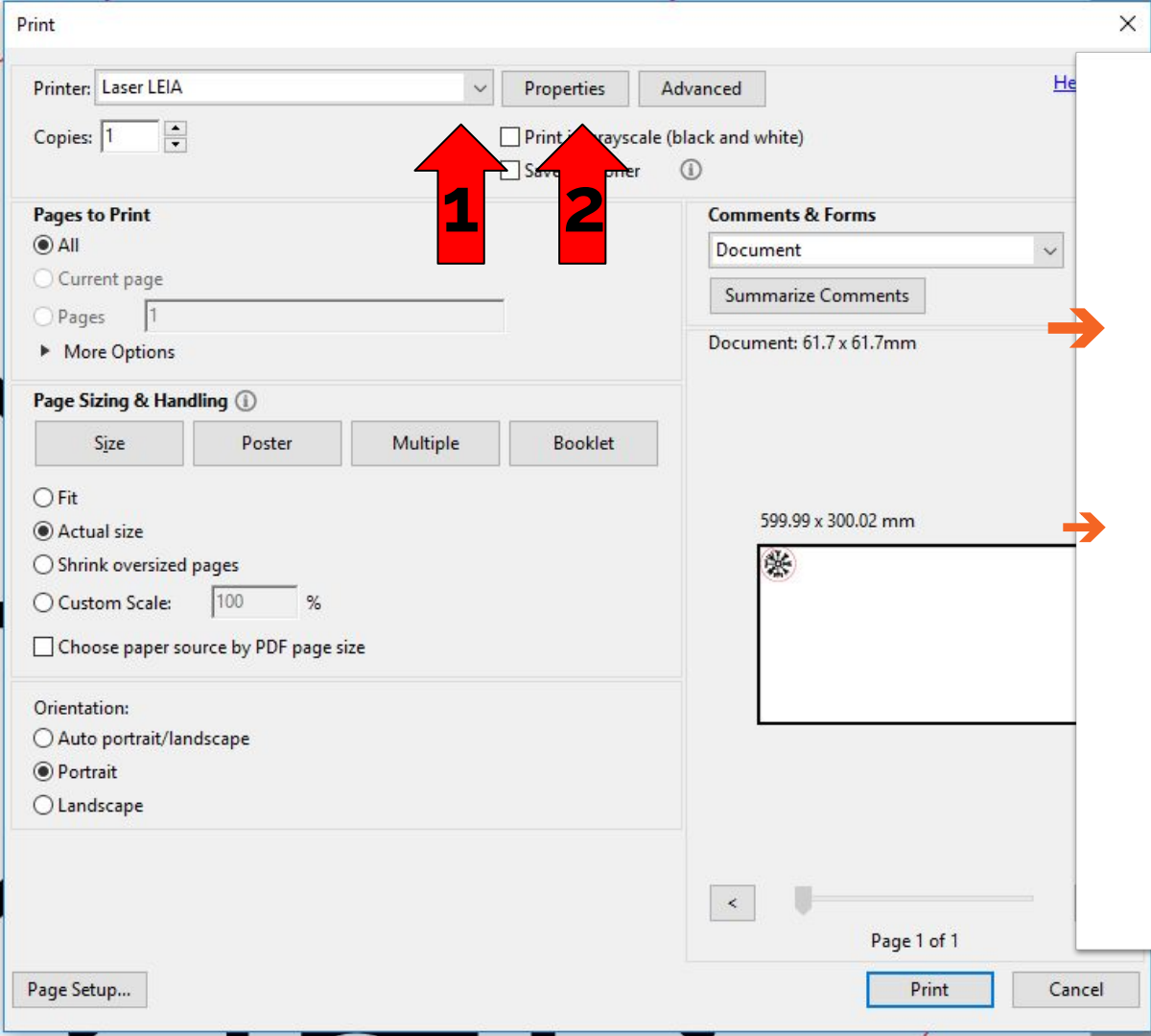
**Now you can move
on to the computer**



8. Open . pdf file



9. Press print



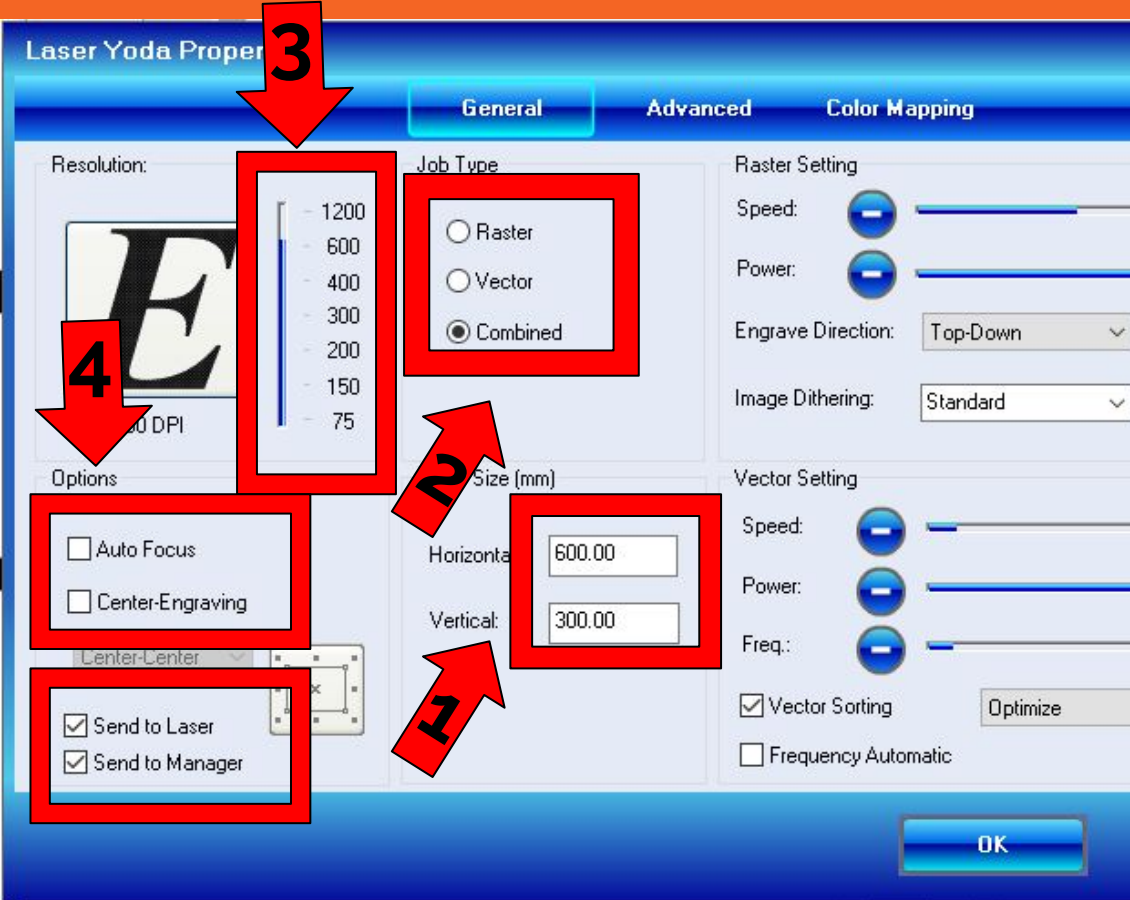
10. Settings

Choose the right printer/laser

Press Properties

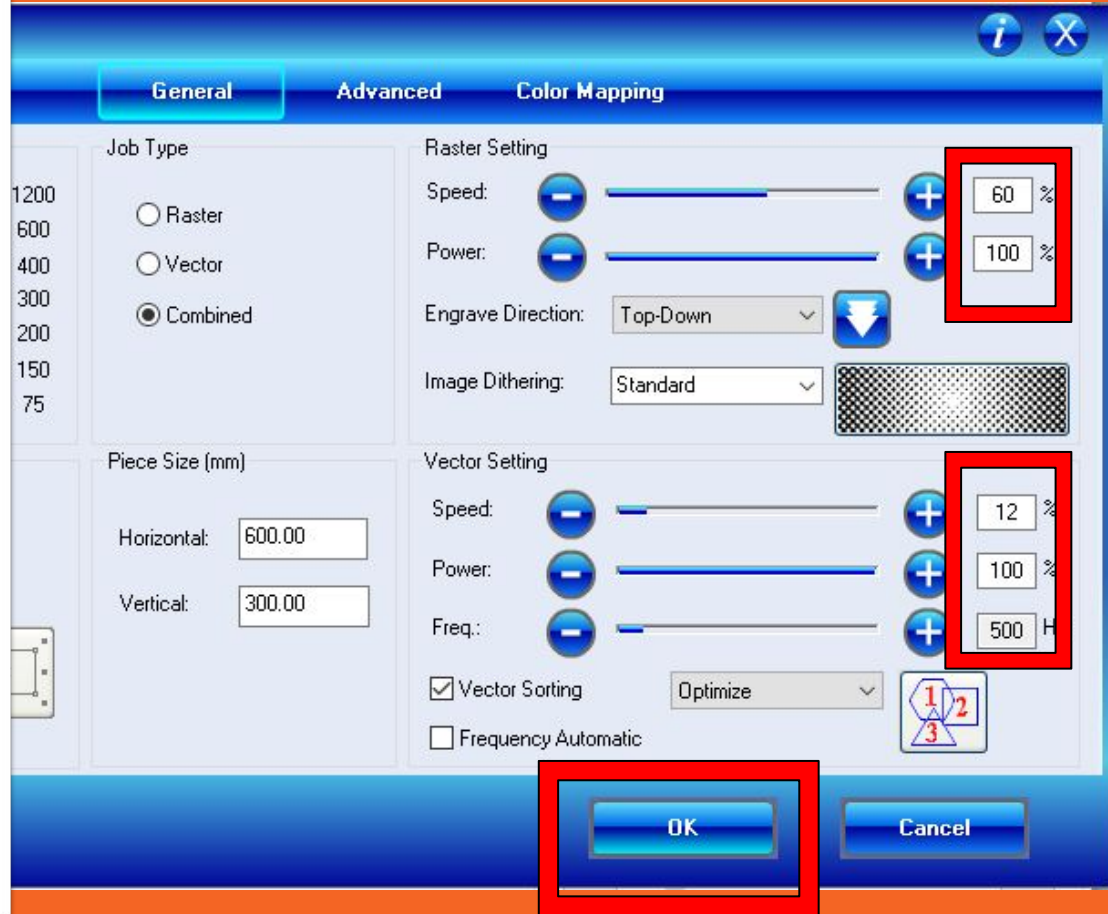
11. Settings

1. Set size
2. Choose Combined
3. Set the dpi to 300-600
4. Check Options



12. Settings

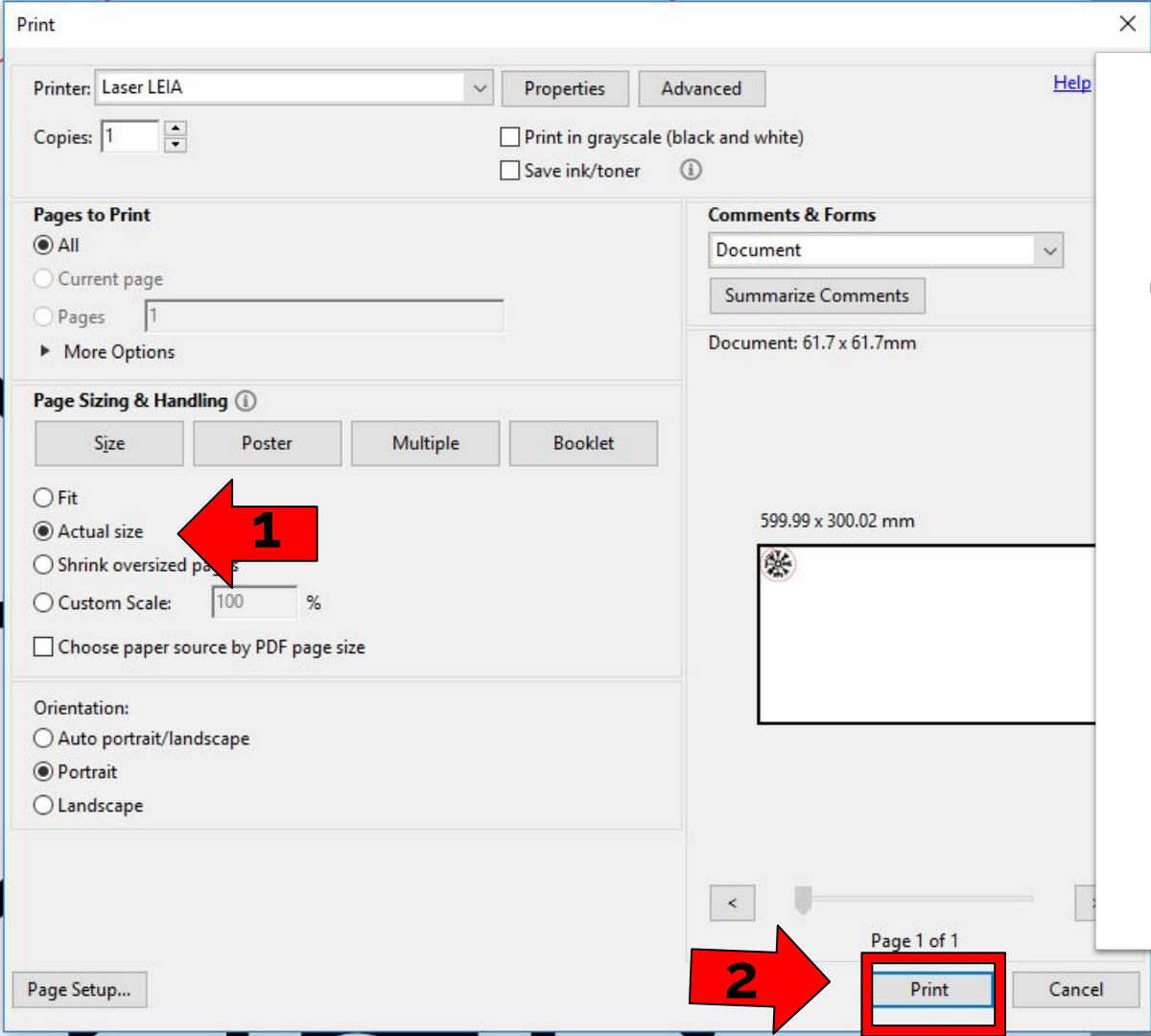
- Set power, speed and frequency
- These are the settings for wood
- Press OK



13. Settings for different materials

	Raster	Vector
→ Plexy	100/50	12/100/5000
→ Wood	60/100	12/100/500

For more settings look at the wall in the laser room



14. Settings

→ Choose Actual Size

→ Press Print

15. Turn the air press on





16. Laser time !

→ **The data is sent to the laser**

A green light will turn on above Data and off when it is ready to start
Then you can...

→ **Press the GREEN go button**

The laser will start

17. Safety

→ **Keep an eye on it**

Keep an eye on the laser, if the material begins to burn you open the glass and the laser turns off

→ **Opening the glass**

When the glass is opened the laser head will still move

But the laser will turn
off

The laser will turn on again when the glass is closed