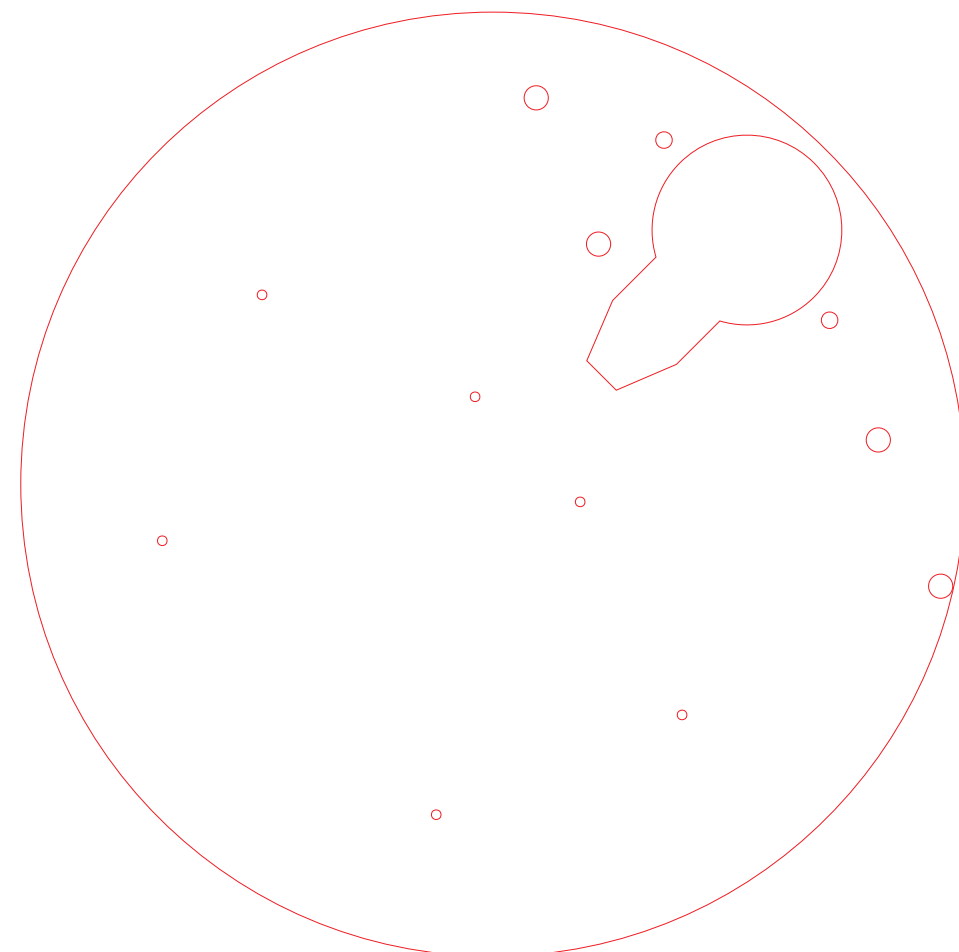
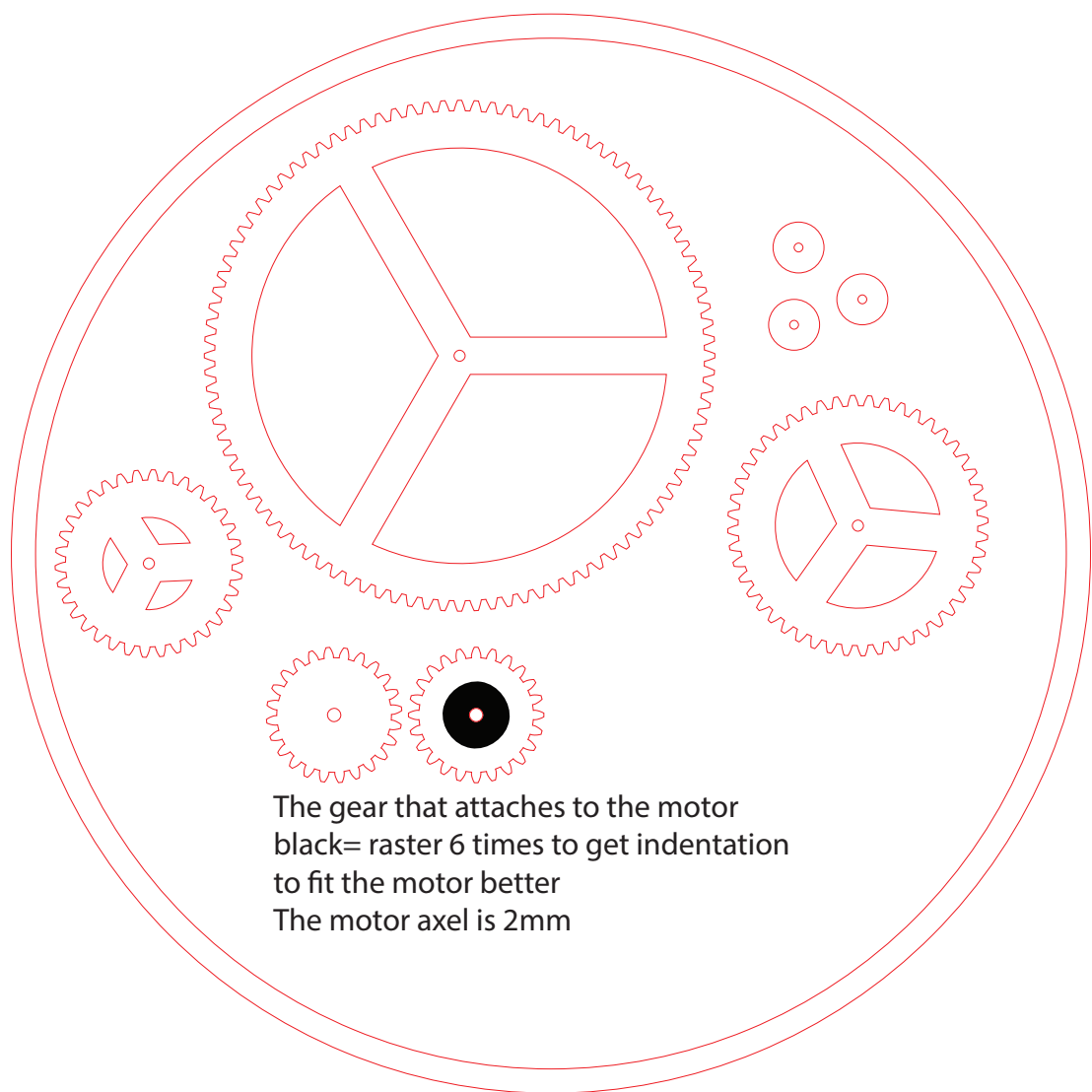


3mm Plexy Outer Circle
Black=raster 5 times for nail heads to go in



3mm Plexy Inner Circle
Holes designd for 3mm bolts (20 mm long) and 1.4mm nails (25 mm long)



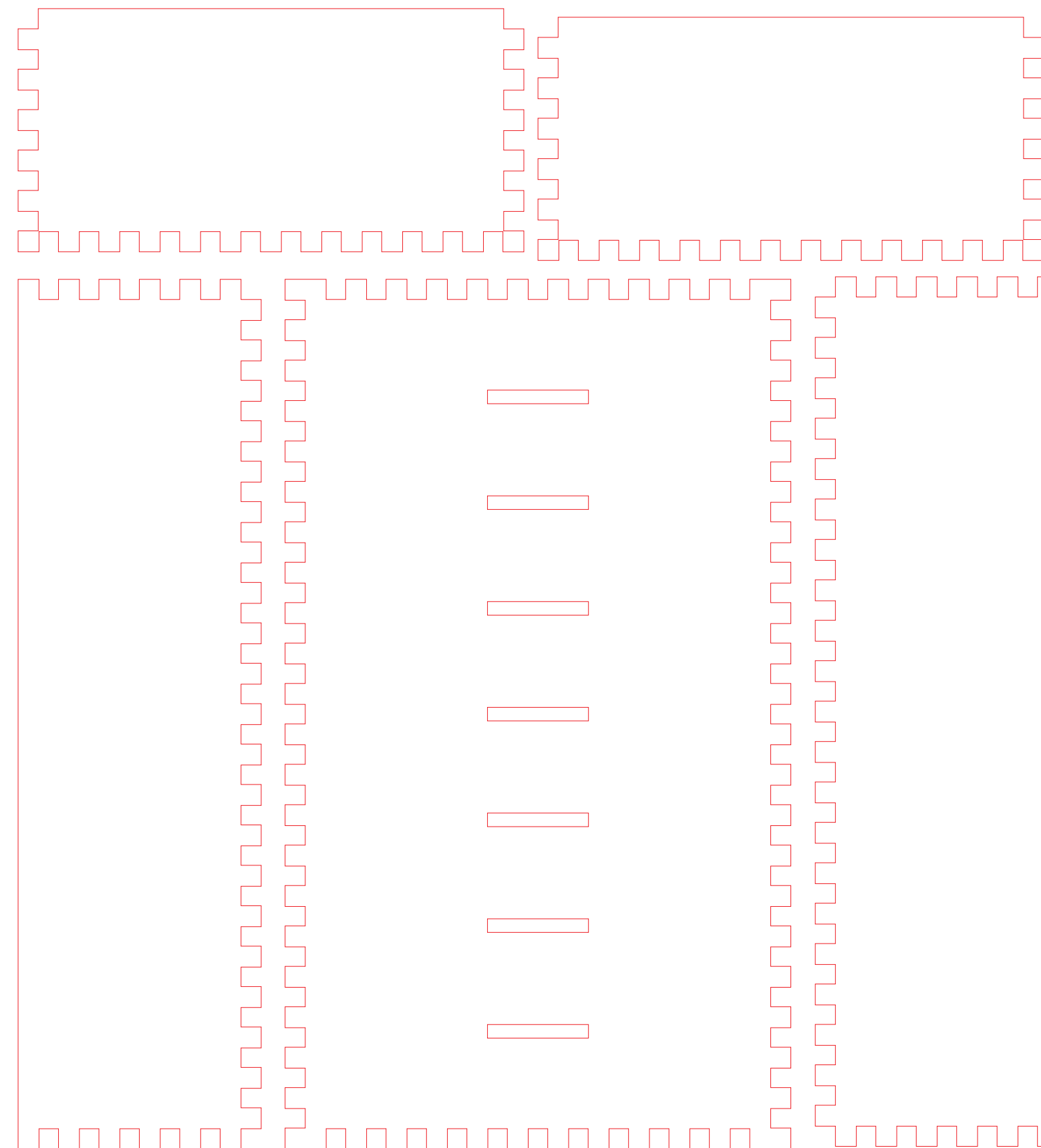
The gear that attaches to the motor
black= raster 6 times to get indentation to fit the motor better
The motor axel is 2mm



Housing for the motor to protect it from the magnet.
Black=raster 6 times- optional

4mm MDF cut 3 x Circles for the rim of the wheel and glue together

4 mm MDF Rim Circle for the wheel



Base - 4 mm MDF