

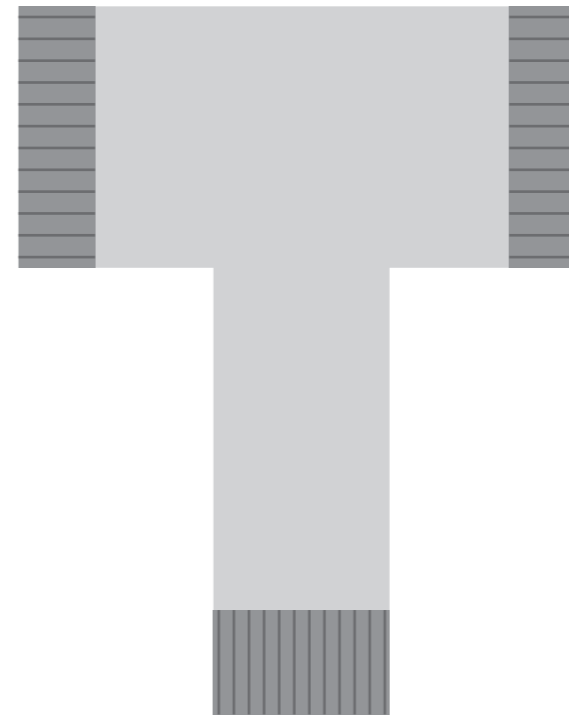
# COMPONENTS

2D DRAWING AND TECHNICAL DETAILS  
(SCALE 1:1)

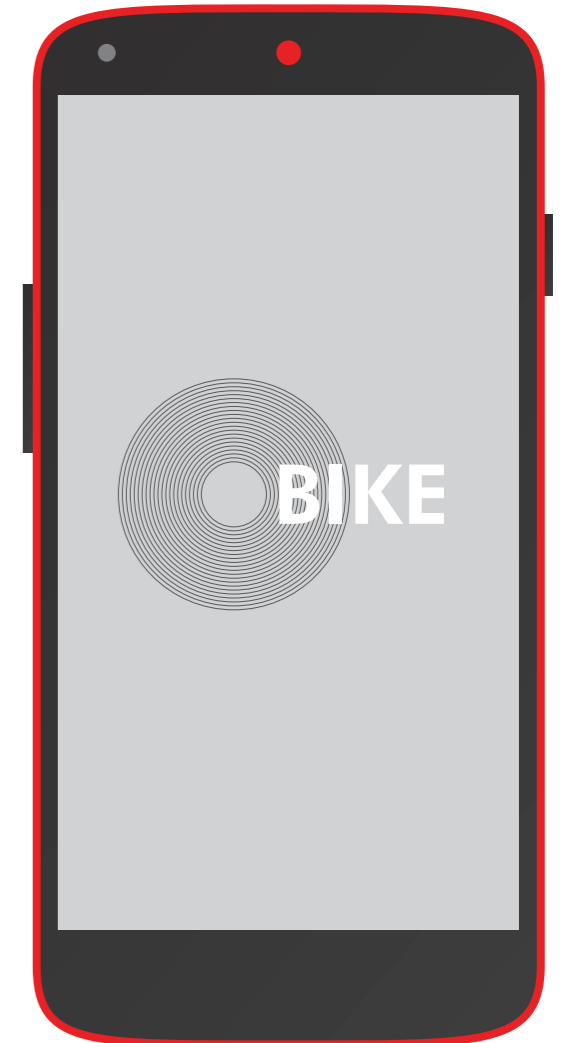
## CASE



## BIKE MOUNT FOR SMARTPHONE

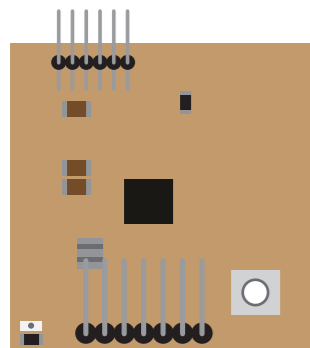


## SMARTPHONE



## MICROCONTROLLER:

### FABKIT 0.4



## SENSORS AND MODULES:



JY-MCU Bluetooth Wireless Serial Port M  
(Compatible for Arduino)



Sharp GP2Y0A21  
(max distance: 80 cm)  
(Compatible for Arduino)



MQ-135 CO2 sensor  
(Compatible for Arduino)

LiPo Battery 7.4V 1000mAh

