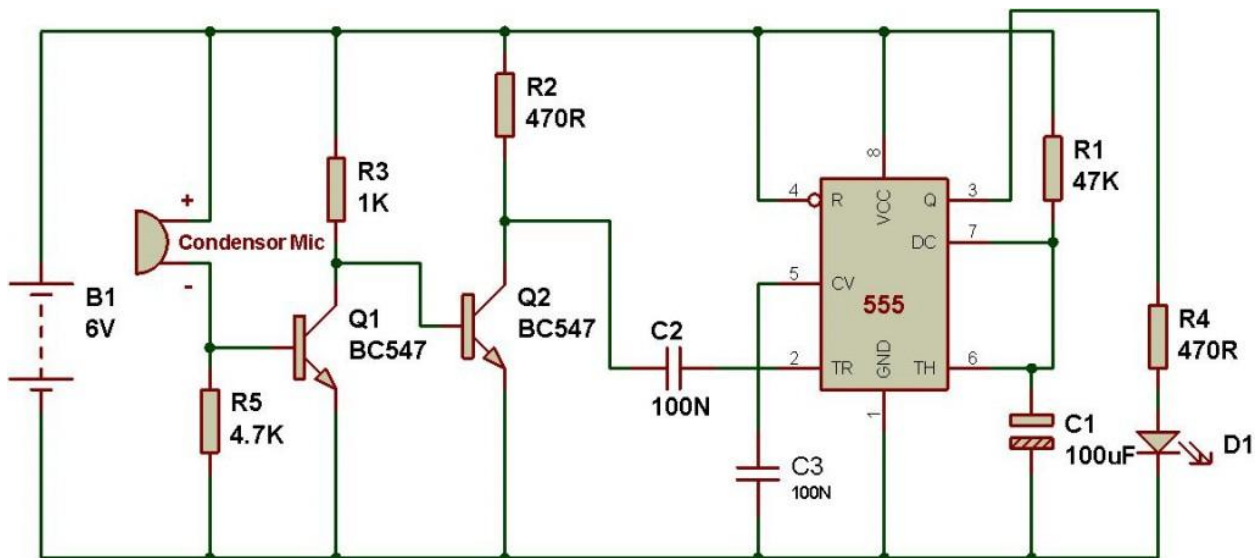


MY PROJECT DEVELOPMENT

Well ever since I started working on these idea I have being getting good and bad results from various tests but I never gave up as I want good results so I kept on searching online for solutions then I came across this were the guys used a 555timer to make the circuit work just like the first schematic I got it worked but not the way I wanted, so I decided to give it a try to see it their circuit is working perfectly well to my surprise the circuit worked well.

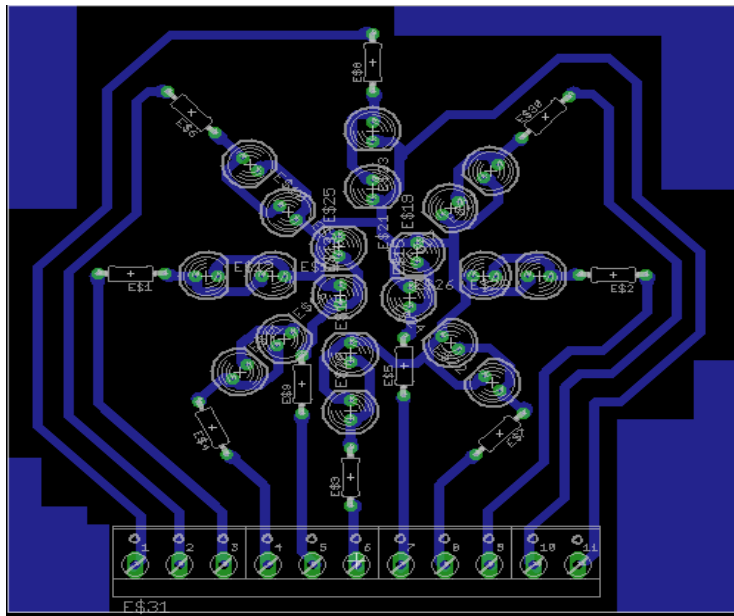
Here is the schematic for the circuit:



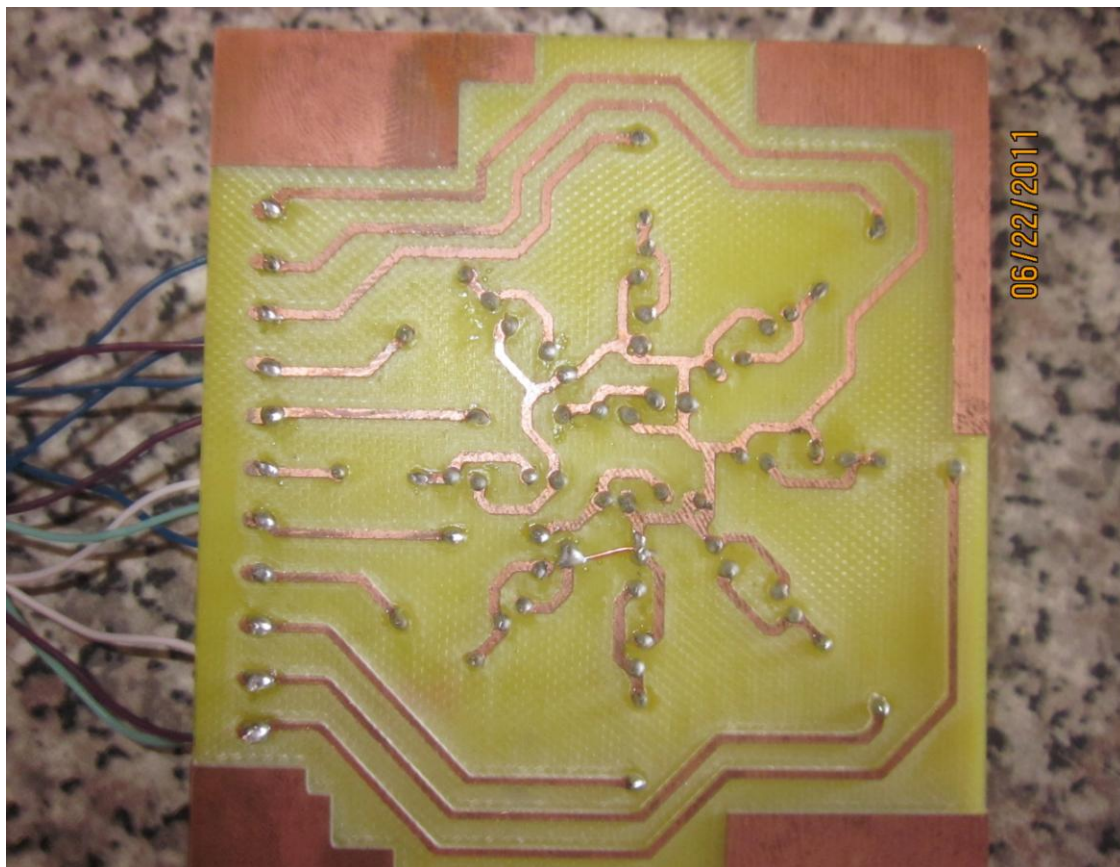
Well the circuit looks so easy to be constructed as it doesn't require too many components so I decided to enhance it a little bit by introducing the 4017 chip like on the first circuit I was working on.

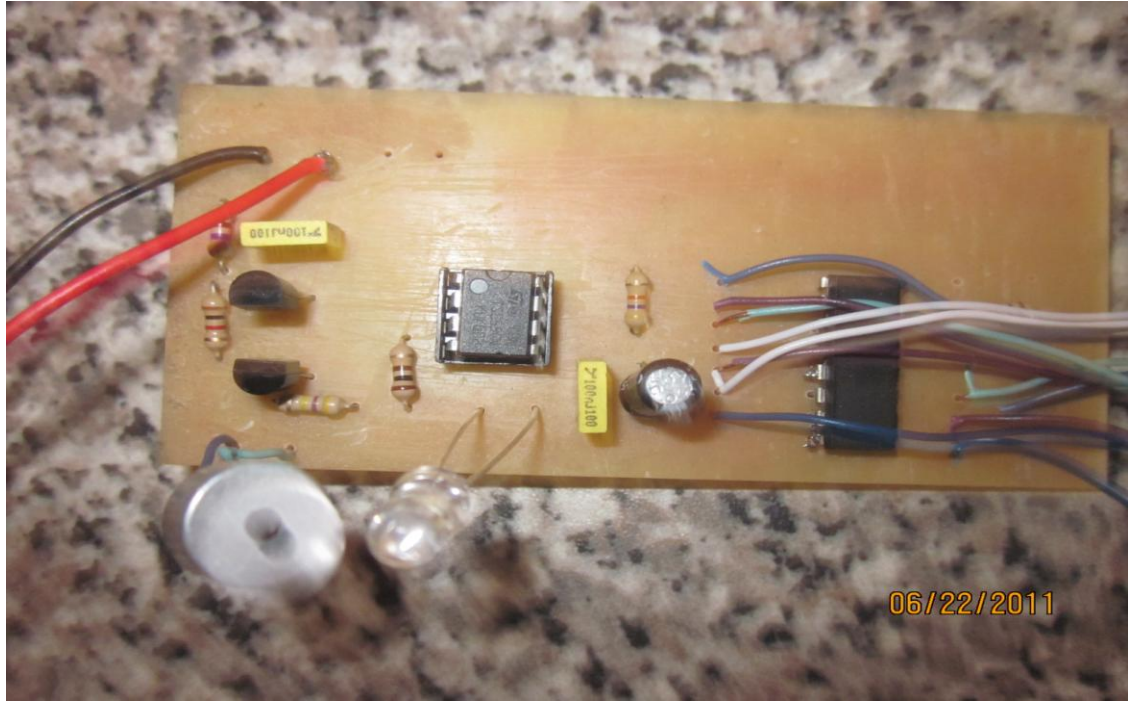
Here is the schematic of the second circuit and the board I build:

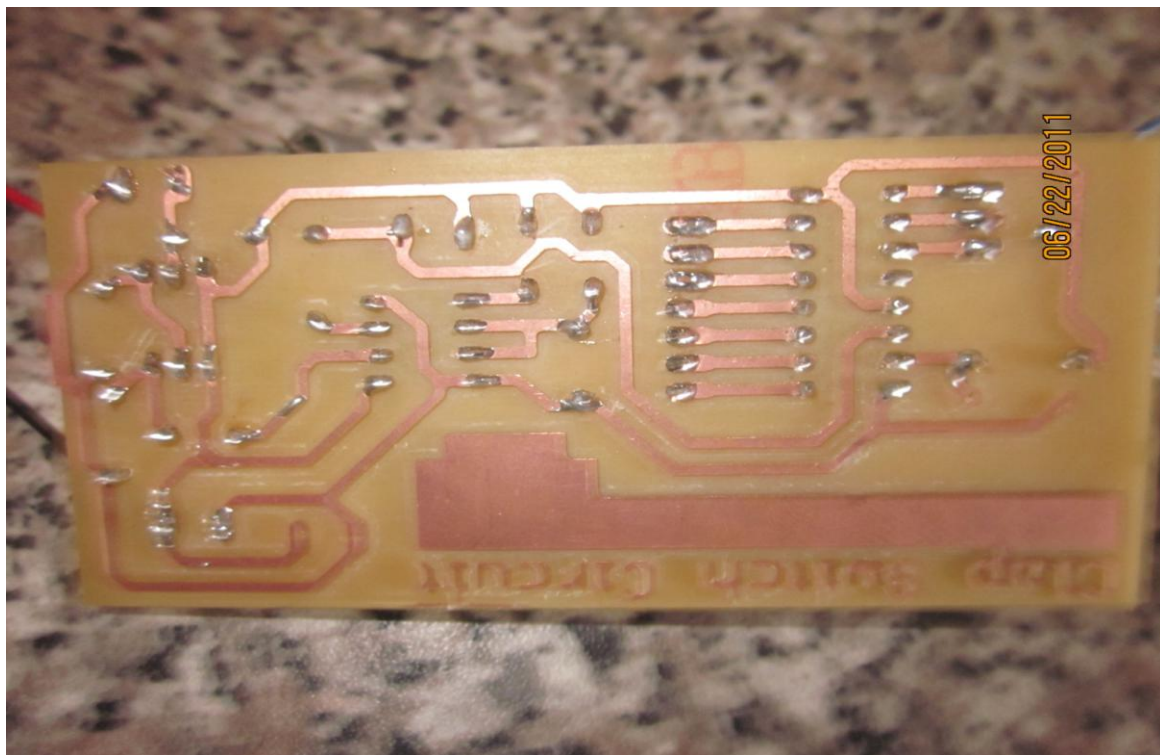
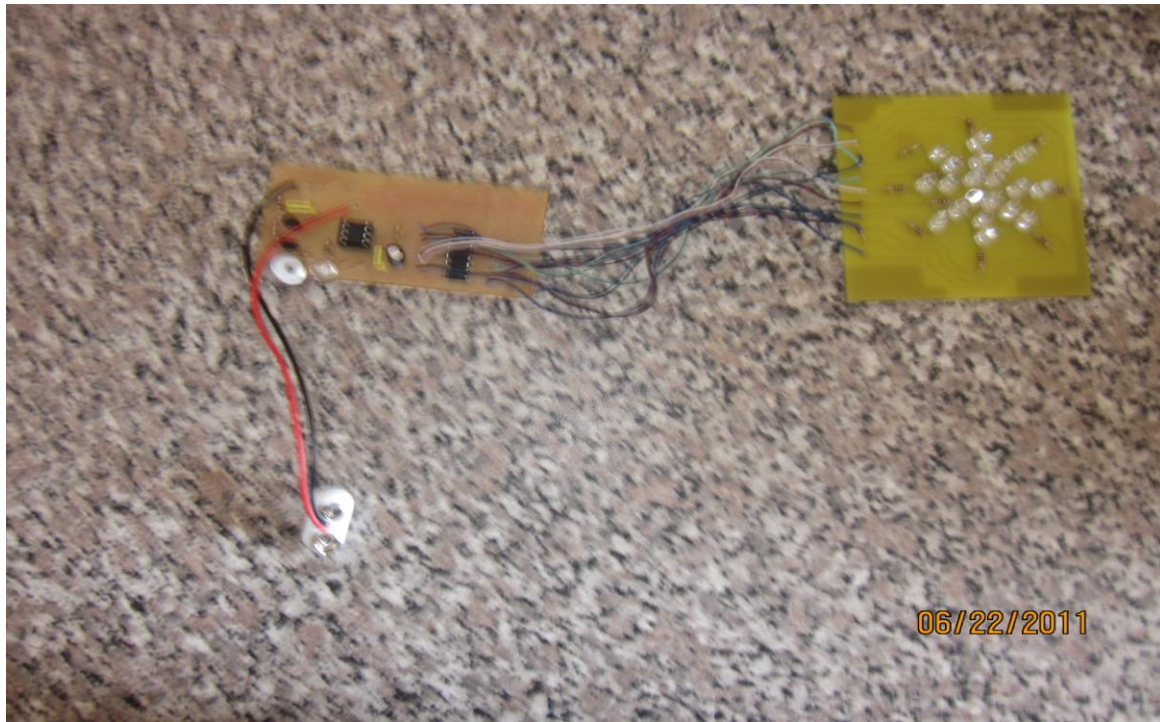
Leds board



Then these is how it looked like after it was cut on the Modela Machine and soldered







So the next step is to interface it with a microcontroller so that I can be able to switch many appliances once without waiting for another clap before it can switch another appliance.

